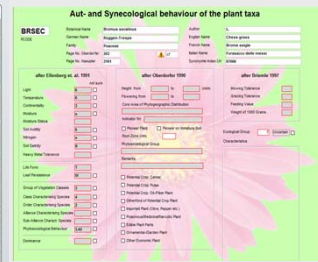
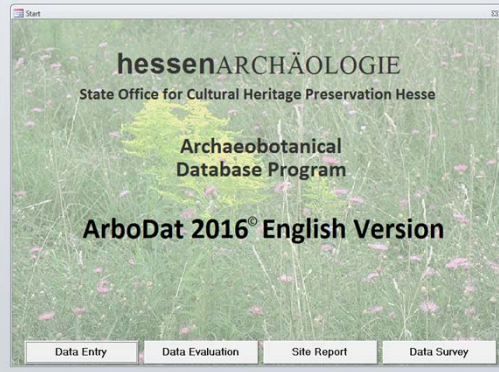


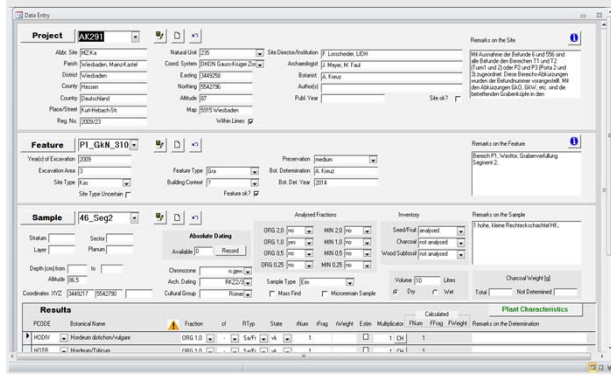
The development of *ArboDat* reaches back almost twenty years, when the first version of the archaeobotanical data base program was conceptualised in the context of the priority research program SPP 190 "Romanisierung" funded by the German Research Foundation DFG. Since then, a number of functional upgrades have been edited by the State Office for Cultural Heritage Preservation of Hesse, Wiesbaden, and the program is distributed now in more than 40 archaeobotanical working groups of Europe. Today *ArboDat* 2016 represents a unique package comprising a core program for data archiving as well as additional useful and time economising tools for the handling and evaluation of archaeobotanical data. *ArboDat* 2016 and the additional tools *TaxaTransfer* and *TaxaMerge* are available as German and as English versions. The program and detailed German and English manuals are given free of charge to researchers based upon the agreement on e.g. the sharing of the same plant codes and other structural terms in order to facilitate an easy exchange and joint evaluation of data collected by different working groups in future.



*ArboDat* comprises a comprehensive list of taxa each defined by a plant code PCODE and a botanical name. The most commonly used taxa are complemented by German, English and French language names and some other parameters. Further ecological and other information for each taxon can be recorded individually.

Apart from the plant codes PCODE and the botanical names other pre-defined terms, e.g. for the site type, the feature type, the type of plant remains etc. are available by pull-down menus during the data entry. These so-called *structural data* guarantee the uniform recording of data by the whole user community.

### Standardised Data Archiving



### Additional Tools

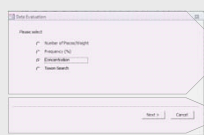
**TaxaMerge**  
for combining taxalists resulting from the interactive evaluations. It works as Excel add-on, merging taxalists with a different number of rows into one table with columns of both source tables listed serially.



**TaxaTransfer**  
for the import of taxa lists from Excel sheets into the data tables of *ArboDat*.

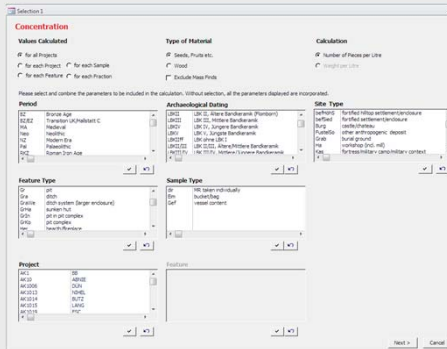
These and other additional programs and macros are handed out together with the *ArboDat* package.

### Preprogrammed Interactive Evaluations

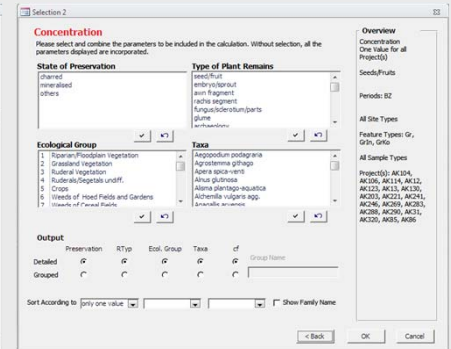


### Selection Menus for different Calculations

**Menu 1**  
selection of the reference parameters entering the calculation  
archaeological period and dating, site type, feature and sample type etc.



**Menu 2**  
selection of the taxa and related characteristics  
choice of preservation, type of plant remains, all/several or single taxa etc.  
Various options for grouping the taxa and other parameters



The provided *Excel* file consists of  
- a readily formatted taxa list with the calculated values on the first sheet  
- a protocol of the parameters involved in the calculation on the second sheet

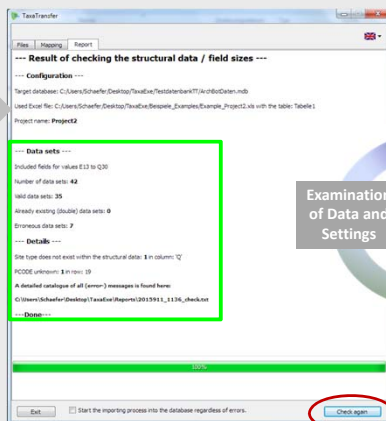
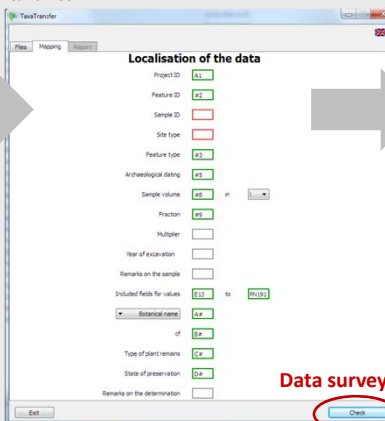
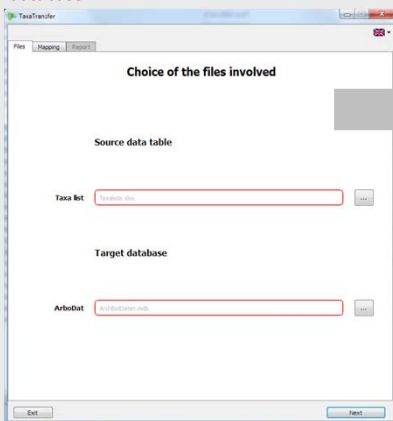


### TaxaTransfer >>> Import of Taxa Lists from Excel Sheets into ArboDat

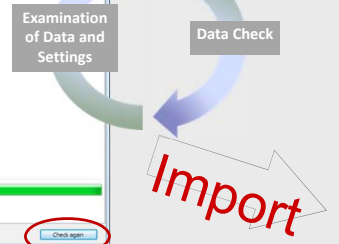
Choice of the source taxa list and the target database

Localisation of the field contents within the taxa list

Report indicating inadequate or lacking data



Before the import of the data the original taxa list is checked, if the data obligatory for *ArboDat* are complete and if all the terms being in accordance with the pre-defined ones in *ArboDat*.



A separate *TaxaTransfer* manual with detailed instructions and examples is provided in German and in English.